



iPlayer[®] 2

GETTING STARTED GUIDE

© 2001 Color Kinetics Incorporated

Chromacore, Color Kinetics, the Color Kinetics logo, iColor, and iPlayer are registered trademarks and ColorBlast, ColorPlay, Coup de Color, Smartjuice, and QuickPlay are trademarks of Color Kinetics Incorporated.

All other brand or product names are trademarks or registered trademarks of their respective owners.

Made and printed in the USA.

PUB-000060-00 Rev 00

About This Guide

This guide describes installation and setup of iPlayer® 2 and QuickPlay™ software. For more information about these products, refer to the iPlayer 2 User Guide or to the QuickPlay Online Help System.

iPlayer 2 System Requirements

Before setting up iPlayer 2 and QuickPlay software, make sure your computer meets these minimum system requirements:

Operating system	Windows 98 2nd Edition, 2000, ME
Free hard disk space required	30MB
RAM required	64MB
Language	English
CD-ROM drive	

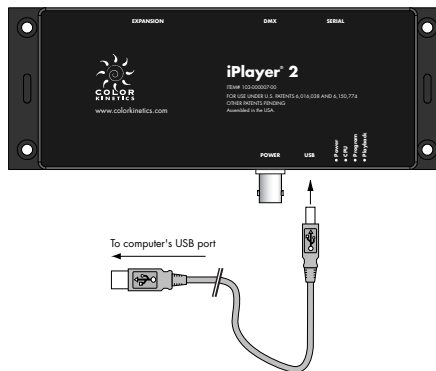
iPlayer 2 Setup

The first time you connect iPlayer 2 to your computer, you will be prompted to install the iPlayer 2 device drivers. These drivers are located on the QuickPlay CD-ROM.

Note: Depending on your system configuration, you might be prompted to install additional Windows system files. Have your Windows Installation Disk handy before you begin installing the iPlayer 2 device drivers.

Installing the iPlayer 2 USB device drivers

- 1.** Make sure your computer is on and the Windows operating system is running.
- 2.** Insert the QuickPlay software CD into the CD-ROM drive.
- 3.** Using the USB cable, connect the USB port on iPlayer 2 to your computer's USB port. (The USB cable is keyed to ensure proper installation.)



Windows automatically detects iPlayer 2 and launches the Add New Hardware Wizard.

- 4.** Follow the on-screen prompts to begin installing the device drivers.
- 5.** When prompted to search for the drivers, select the **Specify a Location** option, and click Browse. The device drivers are located on the QuickPlay software CD. Drivers for Windows 98 and Windows 2000 are located in the **iPlayer2 Driver (Win98_2K)** folder. Drivers for Windows ME are located in the **iPlayer2 Driver (WinME)** folder. Choose the appropriate drivers for your operating system.

Note: Depending on your system configuration, you may be prompted to install multiple device drivers for iPlayer 2.

QuickPlay Setup

iPlayer 2 comes packaged with QuickPlay software. You use QuickPlay to control iPlayer 2 from your PC.

Installing QuickPlay

1. Make sure your computer is on and the Windows operating system is running.
2. Insert the QuickPlay software CD into the CD-ROM drive.
3. Double-click **Install QuickPlay.exe** and follow the on-screen prompts to install the software.

Configuring QuickPlay for iPlayer 2

1. Using the USB cable, connect the USB port on iPlayer 2 to your computer's USB port.
2. Start QuickPlay by choosing Start > Programs > Color Kinetics > QuickPlay.

The first time you start QuickPlay, the Configuration dialog box appears.



- 3.** Choose iPlayer 2 from the device list.
- 4.** Choose USB from the Port list.
- 5.** In the Live Play Lights field, enter the number of lights in your installation.
- 6.** Click OK to save your configuration settings. The next time you start QuickPlay it will automatically load these settings.

Congratulations! You are now ready to use iPlayer 2 and QuickPlay with your Color Kinetics lights. For more information about these products, refer to the iPlayer 2 User Guide or to the QuickPlay Online Help System.