



SMART JACK SOFTWARE

V e r s i o n 1 . 0

U s e r G u i d e

© 2000 Color Kinetics Incorporated

Color Kinetics is a registered trademark and Chromacore, ColorBlast, ColorPlay, Coup de Color, iColor, iPlayer, and Smartjuice are trademarks of Color Kinetics Incorporated.

All other brand or product names are trademarks or registered trademarks of their respective owners.

Specifications subject to change without notice.

MAN-0024 Rev 00

CONTENTS

Introducing Smart Jack Software	1
System Requirements	1
Installing Smart Jack Software	1
Using Smart Jack Software	2
Setup	2
Test Mode	2
CIE	3
RGB	3
HSB	4
Random Color	4
Strobe	5
Color Wash	5
Rainbow Wash	6

Introducing Smart Jack Software

Smart Jack Software is a quick, easy way to demonstrate the beauty and versatility of Color Kinetics® Chromacore™ lighting effects. With Smart Jack 3, the Smart Jack Software, and Color Kinetics lights, you have everything you need to display Chromacore lighting effects without setting DIP switches or repowering the lights.

Smart Jack Software 1.0 is compatible with Smart Jack 1, 2, and 3, and iPlayer™. Smart Jack Software is primarily intended for use by Color Kinetics distributors and software developers.

System Requirements

Windows 95/98/ME or Windows 2000/NT

Installing Smart Jack Software

Note: Before you install the Smart Jack Software, make sure the necessary hardware (Smart Jack or iPlayer) is installed. Refer to the Smart Jack 3 Hardware Installation Guide or to the iPlayer User Guide for details.

To install the Smart Jack 1.0 software

1. On the Smart Jack Software CD ROM, double click Setup.exe and follow the on-screen instructions.

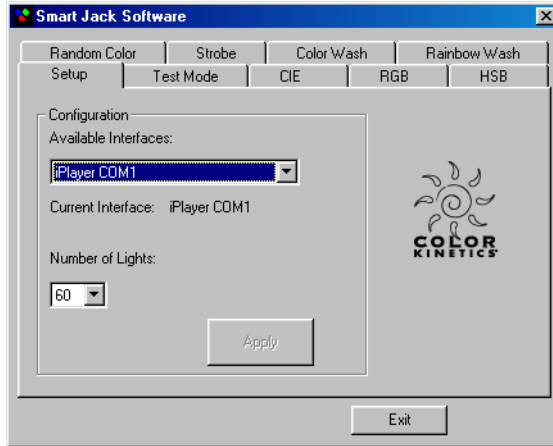
This installs the Smart Jack Software and places a shortcut in the Start menu.

Using Smart Jack Software

To start the Smart Jack Software, choose Start > Programs > Color Kinetics > Smart Jack.

Setup

The Setup tab contains options for setting up the interface and the number of lights.

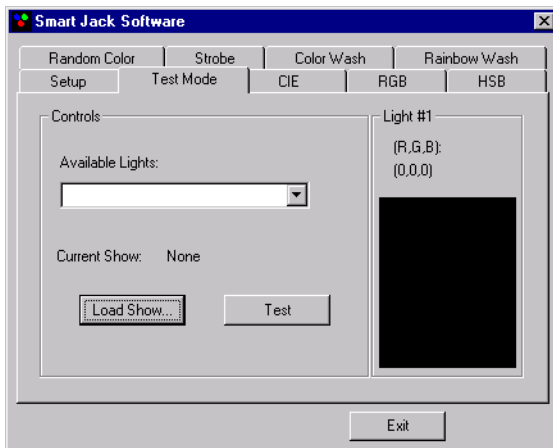


To set up Smart Jack Software

1. Choose your interface from the Available Interfaces list. For example, if you have a Smart Jack 3 connected to your computer's USB port, choose Smart Jack 3 USB.
2. Set the Number of Lights option to the number of lights in your installation.
3. Click Apply.

Test Mode

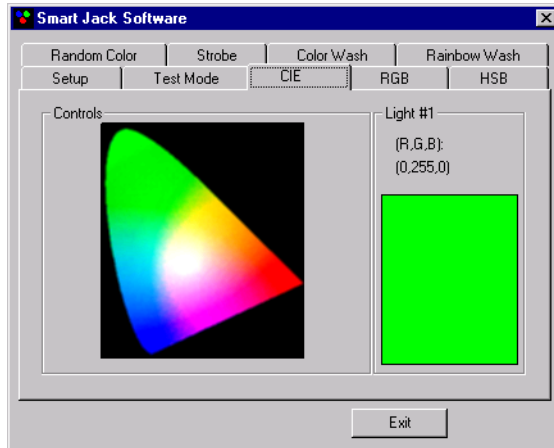
The Test Mode tab lets you load light names and DMX addresses from a ColorPlay light show to test the lights in the show.



To test lights

1. Click the Load Show button and select a ColorPlay show file (.show).
The Available Lights list updates to show all the lights in your show.
2. Choose a light from the Available Lights list and click the Test button.
When you click the Test button, the selected light turns on to full white.

CIE



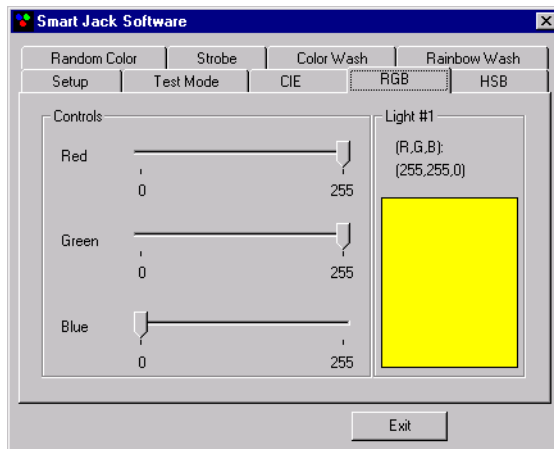
The CIE tab lets you choose a fixed color from the CIE chromaticity map.

- To choose a color, click anywhere in the chromaticity map on the left.

The lights display the color you choose.

The Display area on the right shows RGB values and a color swatch of the color that is displayed on all connected lights.

RGB



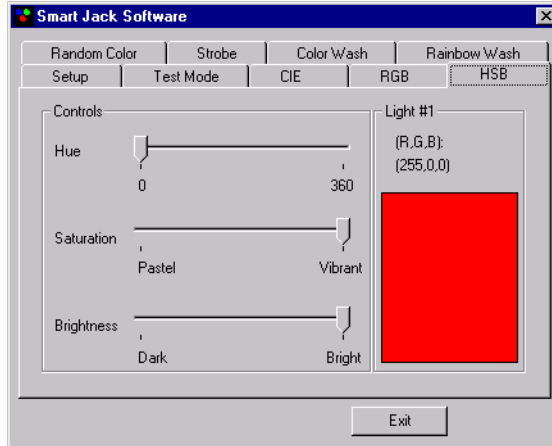
The RGB tab lets you choose a fixed color by setting Red, Green, and Blue values.

- To choose a color, drag the Red, Green, and Blue sliders to set the values for those colors.

The lights display the color you choose.

The Display area on the right shows RGB values and a color swatch of the color that is displayed on all connected lights.

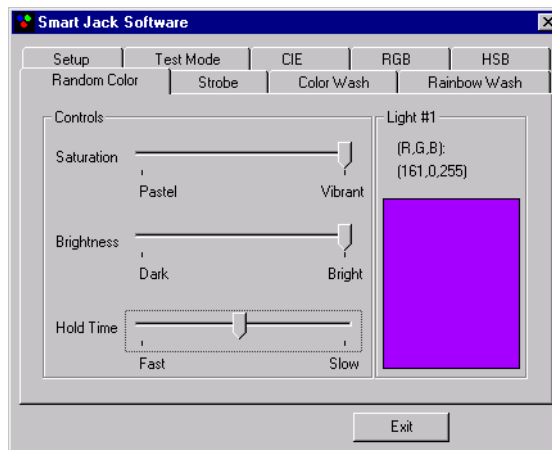
HSB



The HSB tab lets you choose a fixed color by setting Hue, Saturation, and Brightness values.

- To choose a color, drag the Hue, Saturation, and Brightness sliders to set their values. The lights display the color you choose. The Display area on the right shows RGB values and a color swatch of the color that is displayed on all connected lights.

Random Color



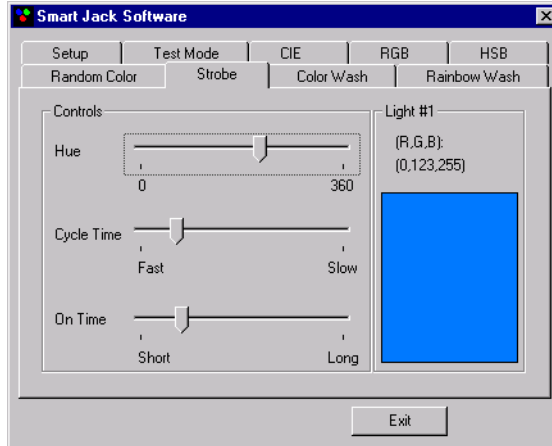
The Random Color effect displays a random sequence of colors.

- To set the Saturation and Brightness levels for all colors in the effect, adjust the Saturation and Brightness sliders.
- To set the Hold Time for each color (the length of time each new color is displayed) adjust the Hold Time slider.

The lights display the Random Color effect you choose.

The Display area on the right shows RGB values and a color swatch of the color that is displayed on all connected lights.

Strobe



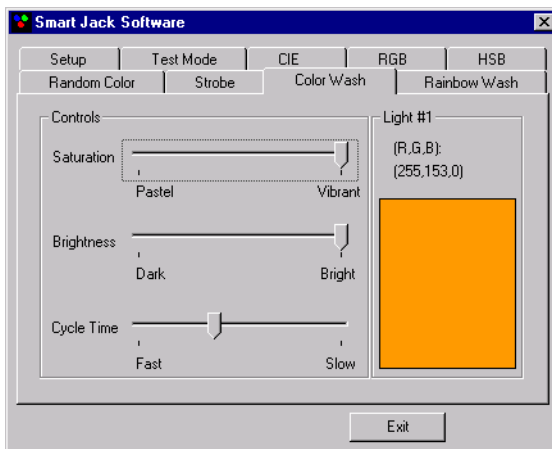
The Strobe effect displays a series of bright flashes. You can control the color and speed of the flashes.

- To set the color, adjust the Hue slider.
- To set the length of time between each flash, adjust the Cycle Time slider.
- To set the length of each flash, adjust the On Time slider.

The lights display the Strobe effect you choose.

The Display area on the right shows RGB values and a color swatch of the color that is displayed on all connected lights.

Color Wash



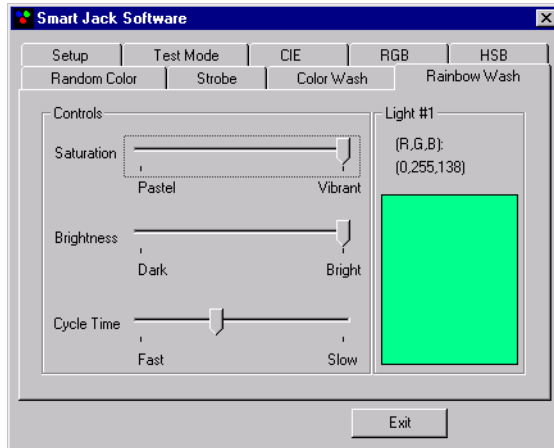
In the Color Wash effect, colors transition gracefully from color to color, cycling through the entire color wheel.

- To set the Saturation and Brightness levels for all colors in the effect, adjust the Saturation and Brightness sliders.
- To set the amount of time it takes to cycle through the entire color wheel, adjust the Cycle Time slider.

The lights display the Color Wash effect you choose.

The Display area on the right shows RGB values and a color swatch of the colors that are displayed on all connected lights.

Rainbow Wash



When you apply the Rainbow Wash effect to a group of lights, colors of the rainbow appear to chase each other from light to light.

- To set the Saturation and Brightness levels for all colors in the effect, adjust the Saturation and Brightness sliders.
- To set the amount of time it takes to cycle through the entire color wheel, adjust the Cycle Time slider.

The lights display the Rainbow Wash effect you choose.

The Display area on the right shows RGB values and a color swatch of the colors that are displayed in light number 1.

INDEX

A

apply 2
available interfaces 2
available lights 2

B

brightness 4, 5, 6

C

chromaticity map 3
CIE 3
color wash 5
ColorPlay 2
cycle time 5, 6

F

fixed color
 CIE 3
 HSB 4
 RGB 3

H

hold time 4
HSB 4
hue 4, 5

I

installation 1
interface 2
iPlayer 1, 2

L

load show 2

N

number of lights 2

O

on time 5

R

rainbow wash 6
random color 4
RGB 3

S

saturation 4, 5, 6
setup 2
setup.exe 1
Smart Jack 2
Smart Jack Software
 installing 1
 setup 2
 starting 2
 using 2
starting Smart Jack Software 2
strobe 5
system requirements 1

T

test mode 2