



⚠ Must be installed by a qualified electrician in accordance with all national and local electrical and construction codes and regulations.

Doit être installé par un électricien qualifié conformément aux codes et réglementations électriques nationaux et locaux du bâtiment.
Muss von einem geprüften Elektriker in Übereinstimmung mit allen nationalen und örtlichen elektrischen Codes und Regelungen installiert werden.

La instalación debe realizarla un electricista calificado siguiendo todos los códigos y normativas eléctricas y de construcción, tanto nacionales como locales.

Devono essere installati da un elettricista qualificato in conformità con le norme locali e nazionali vigenti in materia di costruzioni edilizie e installazione di impianti elettrici.

Moet door een gekwalificeerd elektricien overeenkomstig alle nationale en lokale elektrische verordeningen worden geïnstalleerd.

国または地域の建築コードおよび規制にすべて従い、資格のある電気技師が設置してください。

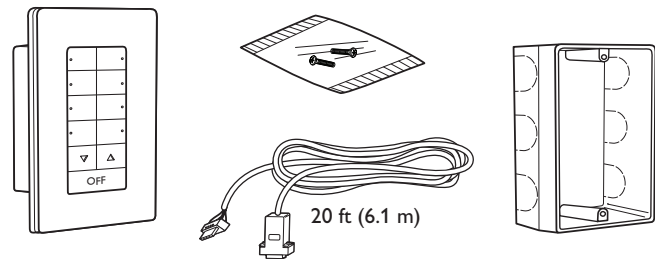
必须根据所有国家和地方的电气和施工准则及规范，由符合资格的电工进行安装。

www.colorkinetics.com/support

1

Confirm all components received

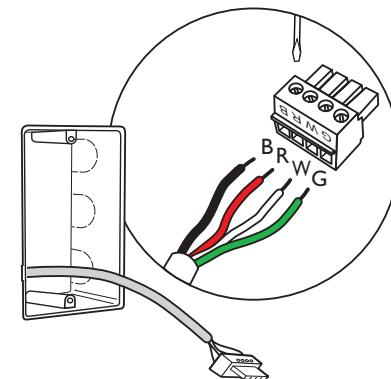
Confirmez la réception de l'intégralité des composants
Bestätigen Sie, dass Sie alle Bestandteile erhalten haben
Compruebe si ha recibido todos los componentes
Confermare tutti i componenti ricevuti
Controleer alle ontvangen componenten
すべてのコンポーネントが揃っていることを確認します。
确认收到了所有部件



2

Wire cable into junction box

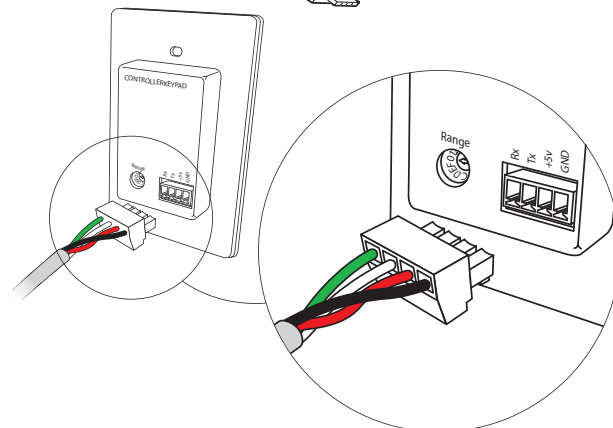
Câblez à la boîte de dérivation
Spannen Sie das Kabel in die Abzweigdose
Conecte el cable a la caja de conexiones
Collegare il cavo nella scatola di giunzione
Sluit kabel aan op kabeldoos
ケーブルをジャンクションボックスに配線します。
将电缆接入接线盒



3

Plug cable into Keypad

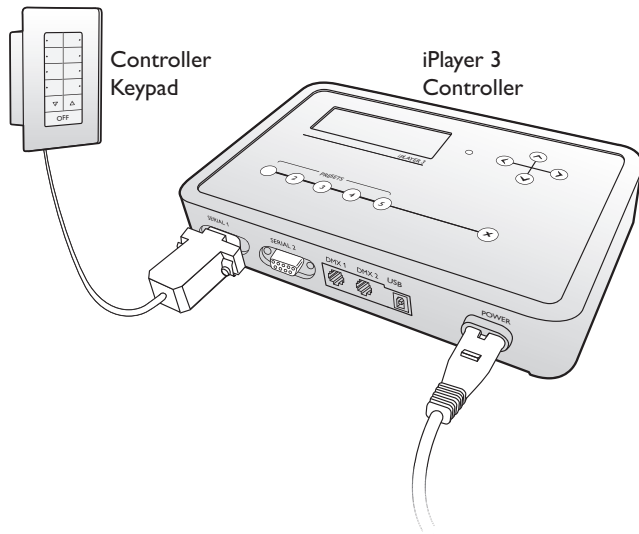
Branchez le câble dans le Keypad
Stecken Sie das Kabel in das Keypad ein
Enchufe el cable en Keypad
Collegare il cavo al Keypad
Steek de kabel in het Keypad
ケーブルをKeypadに差し込みます。
将电缆插入键盘



4

Connect to iPlayer 3

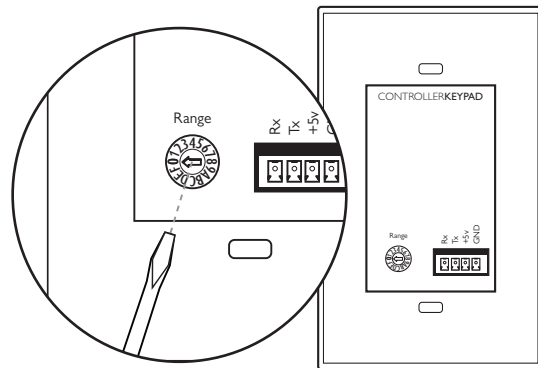
- Branchez au iPlayer 3
- An den iPlayer 3 anschließen
- Conéctelo a iPlayer 3
- Effettuare il collegamento a iPlayer 3
- Verbind met iPlayer 3
- iPlayer 3への接続
- 连接到 iPlayer 3



5

Set Show Range switch position (optional for multiple keypad installation)

- Réglez la position du commutateur Show Range
(en option avec des installations multiples de contrôleur de clavier)
- Den Show Range-Schalter einstellen
(optional für Installationen mit mehreren Controller Keypads)
- Ajuste la posición del interruptor Show Range
(opcional para varias instalaciones de Controller Keypad)
- Impostare la posizione dell'interruttore Show Range
(opzionale per più installazioni di Controller Keypad)
- Stel de Show Range switchpositie in
(optioneel voor meerdere Controller Keypad installaties)
- Show Rangeスイッチ位置に設定 (複数のController Keypadを装着する場合のオプション)
- 设置 Show Range 开关位置 (可选, 适用于多个控制器键盘安装)



Switch Position Position du sélecteur Position umschalten Posición del interruptor Posizione dell'interruttore Schakel positie スイッチ位置 开关位置

0	1	2	3	4	5	6	7	8	9	A	B	C	D	E	F
1 - 8	9 - 16	17 - 24	25 - 32	33 - 40	41 - 48	49 - 56	57 - 64	65 - 72	73 - 80	81 - 88	89 - 96	97 - 104	105 - 112	113 - 120	121 - 128

Show Range Montre la gamme Bereich anzeigen Show Range (mostrar intervalo) Mostrare l'intervallo Toon bereik 範囲の表示 显示范围

Questions ? Questions ? Fragen ? ¿ Tiene alguna pregunta ?
 Domande ? Vragen ? ご質問はありますか ? 问题 ?

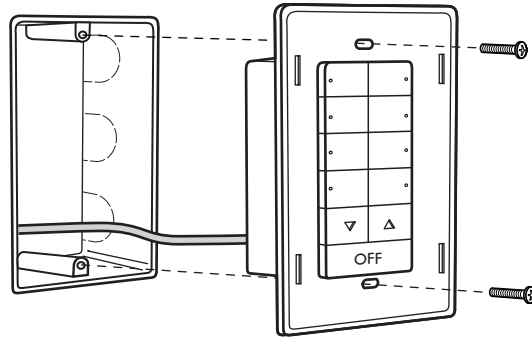
www.colorkinetics.com/ls/controllers/controllerkeypad/



6

Mount Keypad to junction box

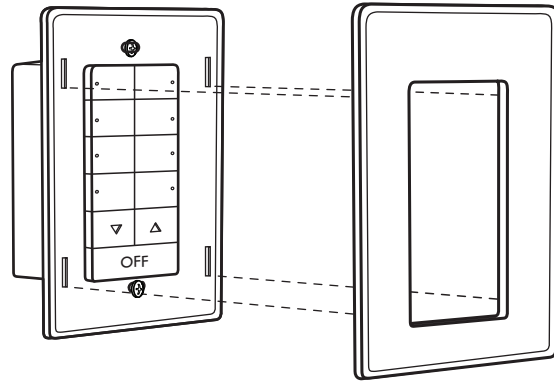
Montez le Keypad à la boîte de dérivation
 Befestigen Sie das Keypad an der Abzweigdose
 Monte Keypad en la caja de conexiones
 Montare il Keypad alla scatola di giunzione
 Bevestig Keypad aan de kabeldoos
 Keypadをジャンクションボックスにマウントします。
 将键盘安装到接线盒



7

Attach faceplate to Keypad

Fixez la plaque frontale au Keypad
 Schließen Sie den Bildschirm am Keypad an
 Adjunte la placa frontal a Keypad
 Fissare lo schermo al Keypad
 Bevestig draagvlak aan Keypad
 フェイスプレートをKeypadに取り付けます。
 将面板连接到键盘



8

Set Controller Keypad trigger with iPlayer 3 / ColorPlay 3

Réglez le déclencheur Controller Keypad avec iPlayer 3 / ColorPlay 3
 Stellen Sie den Controller Keypad-Steuerungsauslöser mit dem iPlayer 3 / ColorPlay 3 ein
 Ajuste el desencadenador de Controller Keypad con iPlayer 3 / ColorPlay 3
 Impostare il trigger di Controller Keypad mediante iPlayer 3/ColorPlay 3
 Stel de Controller Keypad trigger in met iPlayer 3 / ColorPlay 3
 Controller KeypadトリガーとiPlayer 3 / ColorPlay 3の設定
 使用 iPlayer 3 / ColorPlay 3 设置 Controller Keypad 触发器

Item	Item Number	Philips 12NC
Controller Keypad	103-000020-00	910503700223
iPlayer 3 Controller, North America Power Cord	103-000019-00	910403327101
iPlayer 3 Controller, Europe Power Cord	103-000019-01	910503700392

⚠ Do not attempt to install or use until you read and understand the installation instructions and safety labels.

Assurez-vous d'avoir lu et compris les instructions d'installation et les autocollants de sécurité avant l'installation ou l'utilisation.

Installieren oder verwenden Sie einen Beleuchtungskörper erst, nachdem Sie die Installationsanweisungen und Sicherheitsetiketten gelesen haben.

No intente instalar ni utilizar hasta haber leído y comprendido las instrucciones de instalación y las etiquetas de seguridad.

Non installare o utilizzare se non sono state lette e comprese le istruzioni per l'installazione e le etichette di sicurezza.

Voer geen poging uit tot installeren of gebruik totdat u de installatie-instructies en veiligheidslabels hebt gelezen en begrepen.

設置手順と安全ラベルの内容を読み、理解してから設置または使用を始めてください。

请先阅读并理解安装说明和安全标签，再进行安装或使用。

⚠ Do not use if the product housing or power cables are damaged.

N'utilisez pas l'appareil si le boîtier ou des câbles d'alimentation sont endommagés.

Nicht verwenden, wenn das Produktgehäuse oder die Netzkabel beschädigt sind.

No utilice el producto si la carcasa o los cables de alimentación están dañados.

Non utilizzare se l'alloggiamento del prodotto o i cavi di alimentazione sono danneggiati.

Niet gebruiken indien de behuizing of stroomkabels zijn beschadigd.

製品のハウジング、または電源ケーブルが損傷している場合は、使用しないでください。

如果产品的灯壳或电缆受损，切勿使用。

⚠ Do not modify or alter the product. Doing so will void the warranty.

Ne transformez pas et ne modifiez pas le produit. Toute modification annule la garantie.

Nehmen Sie keine Veränderungen an dem Produkt vor. Nichtbeachtung entwertet die Garantie.

No modifique ni altere el producto. Si lo hace, se anulará la garantía.

Non modificare né alterare il prodotto, in caso contrario la garanzia verrà invalidata.

Wijzig of verander niets aan het product. Hierdoor zal de garantie vervallen.

製品を改ざんしたり、変造したりしないでください。改ざんや変造を行うと、保証が無効になります。

切勿修改或更改产品。否则将使质保失效。

This device complies with Part 15 of the FCC Rules. Operation is subject to the following two conditions: 1) This device may not cause harmful interference. 2) This device must accept any interference received, including interference that may cause undesired operation.

NOTE: This equipment has been tested and found to comply with the limits for a Class B digital device, pursuant to Part 15 of the FCC Rules. These limits are designed to provide reasonable protection against harmful interference in a residential installation. This equipment generates, uses, and can radiate radio frequency energy and, if not installed and used in accordance with the instructions, may cause harmful interference to radio communications. However, there is no guarantee that interference will not occur in a particular installation. If this equipment does cause harmful interference to radio or television reception, which can be determined by turning the equipment off and on, the user is encouraged to try to correct the interference by one or more of the following measures: 1) Reorient or relocate the receiving antenna. 2) Increase the separation between the equipment and the receiver. 3) Connect the equipment into an outlet on a circuit different from that to which the receiver is connected. 4) Consult the dealer or an experienced radio / TV technician for help.

This Class B digital apparatus complies with Canadian ICES-003. Cet appareil numérique de la classe B est conforme à la norme NMB-003 du Canada.



Philips Color Kinetics
3 Burlington Woods Drive
Burlington, Massachusetts 01803 USA
Tel 888.385.5742
Tel 617.423.9999
Fax 617.423.9998
www.colorkinetics.com

Copyright © 2008 – 2009 Philips Solid-State Lighting Solutions, Inc. All rights reserved.
Chromacore, Chromasic, CK, the CK logo, Color Kinetics, the Color Kinetics logo, ColorBlast, ColorBlaze, ColorBurst, ColorGraze, ColorPlay, ColorReach, DIMand, EssentialWhite, eW, iColor, iColor Cove, IntelliWhite, iW, iPlayer, Light Without Limits, Optibin, and Powercore are either registered trademarks or trademarks of Philips Solid-State Lighting Solutions, Inc. in the United States and/or other countries. All other brand or product names are trademarks or registered trademarks of their respective owners. Due to continuous improvements and innovations, specifications subject to change without notice.