



iCOLOR FRESCO

POWERED BY CHROMACORE



Color Kinetics® iColor® Fresco is a family of professional lights designed for architectural illumination. iColor Fresco is available in nominal lengths of 4', 2', and 1' and is the ideal solution for architectural highlights and other commercial, retail, or residential applications. Each iColor Fresco unit is designed for use in both interior and exterior installations and meets specifications for use in wet and damp locations.

iColor Fresco projects a soft-edge beam of light at a 100° beam angle. Each unit adjusts through ±180 degrees of angular rotation and mechanically locks in place to maintain the desired lighting orientation. 15-degree angle indicators make multiple light alignments consistent and effortless. For the ultimate in flexibility and control each iColor Fresco unit can be individually addressed along its entire length or at 1-foot intervals for astounding effects. iColor Fresco is controlled using a DMX512 lighting console, a PC, or a Color Kinetics controller.

iColor Fresco is a harmonious blend of art and functionality—its modern, sophisticated look also serves as a protective housing of rugged, extruded anodized aluminum. Every unit comes standard with a UV resistant, clear plastic lens and is pre-wired with power and data cables to minimize installation time. Long runs of lights are inter-connected and mounted using 'T' or 'L' accessory parts. Power is supplied using Color Kinetics PDS-150e, an intelligent power supply specially designed to distribute power and data to all connected lights. Using standard electrical junction boxes, iColor Fresco is extremely versatile and easily adapts to fit even the most creative mounting environments.

iCOLOR FRESCO SPECIFICATIONS

COLOR RANGE	16.7 million (24-bit) additive RGB colors; continuously variable intensity output range
SOURCE	High intensity colored LEDs
BEAM ANGLE	100°
HOUSING	Anodized aluminum
CONNECTORS	Unterminated power and data cable
LISTINGS	C-UL US listed, CE certified, Rated IP65

COMMUNICATION SPECIFICATIONS

DATA INTERFACE	Color Kinetics data interface system
CONTROL	Color Kinetics full line of controllers or DMX512 (RS85) compatible when using Color Kinetics power/data supply

ELECTRICAL SPECIFICATIONS

POWER REQUIREMENT	24VDC
POWER CONSUMPTION	Maximum: 6 Watts (1'), 12 Watts (2'), 24 Watts (4')
POWER SUPPLY	PDS-150e (ITEM# 109-000008-01); PDS-60 24V (ITEM# 109-000017-XX)

ENVIRONMENTAL SPECIFICATIONS

TEMPERATURE RANGE	-20°F to 122°F (-29°C to 50°C)
HUMIDITY RANGE	0 to 95% non-condensing humidity

LED SOURCE LIFE

In traditional lamp sources, lifetime is defined as the point at which 50% of the lamps fail. This is also termed Mean Time Between Failure [MTBF]. LEDs are semiconductor devices and have a much longer MTBF than conventional sources. However, MTBF is not the only consideration in determining useful life. Color Kinetics uses the concept of useful light output for rating source lifetimes. Like traditional sources, LED output degrades over time (lumen depreciation) and this is the metric for SSL lifetime.

LED lumen depreciation is affected by numerous environmental conditions such as ambient temperature, humidity, and ventilation. Lumen depreciation is also affected by means of control, thermal management, current levels, and a host of other electrical design considerations. Color Kinetics systems are expertly engineered to optimize LED life when used under normal operating conditions. Lumen depreciation information is based on LED manufacturers' source life data as well as other third party testing. Low temperatures and controlled effects have a beneficial effect on lumen depreciation. Overall system lifetime could vary substantially based on usage and the environment in which the system is installed.

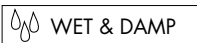
Temperature and effects will affect lifetime. Color Kinetics rates product lifetime using lumen depreciation to 50% of original light output. When the fixture is running at room temperature using a color wash effect, the range of lifetime is in the range of 30,000-50,000 hours. This is LED manufacturers' test data. For more detailed information on source life, please see www.colorkinetics.com/lifetime.

OPTIBIN®

There are inherent variations in the fabrication processes of all semiconductor materials. For LEDs, this variance results in differences in the color and intensity of light output as well as electrical characteristics. Due to these differences, LED manufacturers sort production into "bins," but insuring the availability of a single bin is very difficult. To minimize this issue and achieve optimal color consistency in its products, Color Kinetics has developed and uses a proprietary technology called Optibin. Optibin is an advanced production binning optimization process that minimizes the effects of LED variance for the best possible output uniformity in the final product. Color Kinetics Optibin technology gives the most consistent control of color and intensity from product to product.

CHROMACORE®
BY COLOR KINETICS

OPTIBIN®
BY COLOR KINETICS



SUITABLE FOR WET LOCATIONS

ITEM# 101-000003-00 (4-foot)
101-000003-01 (2-foot)
101-000003-02 (1-foot)

This product is protected by one or more of the following patents:
U.S. Patent Nos. 6,016,038, 6,150,774 and other patents listed at <http://colorkinetics.com/patents/>. Other patents pending.

©2000-2006 Color Kinetics Incorporated. All rights reserved.
Chromacore, Chromatic, Color Kinetics, the Color Kinetics logo, ColorBlast, ColorBlaze, ColorBurst, ColorCast, ColorPlay, ColorScape, Direct Light, iColor, iColor Cove, iPlayer, Optibin, Powercore, QuickPlay, Sauce, the Sauce logo, and Smar juice are registered trademarks and DiMand, EssentialWhite, IntelliWhite, and Light Without Limits are trademarks of Color Kinetics Incorporated.

All other brand or product names are trademarks or registered trademarks of their respective owners.

BRO046 Rev 12

Specifications subject to change without notice.
Refer to www.colorkinetics.com for the most recent data sheet versions.

COLOR KINETICS INCORPORATED • 10 MILK STREET, SUITE 1100 • BOSTON, MA 02108 • USA

TEL 888 FULL RGB • TEL 617 423 9999 • FAX 617 423 9998 • INFO@COLORKINETICS.COM • WWW.COLORKINETICS.COM

iCOLOR FRESCO

PHOTOMETRIC PERFORMANCE (PER FOOT)

SOURCE SPECIFICATIONS

Optics:	Clear polycarbonate
Source:	45 LEDs (15 Red, 15 Green, 15 Blue) per foot
Beam Angle:	100° x 40° (at 50% of peak illuminance)
Distribution:	Asymmetric direct illumination
CCT:	Adjustable 1,000–10,000K
CRI:	Not measurable (CIE 13.3-1995)

ILLUMINANCE DISTRIBUTION

0.8	1.4	1.3	1.3	1.4	0.8	1.5'/0.5m
9.1	14.9	13.8	13.9	14.9	9.1	
2.1	3.9	4.5	4.5	3.9	2.1	0'/0m
22.9	43.0	48.5	48.5	42.9	22.8	
3.9	9.2	18.3	18.3	9.1	3.9	1.5'/0.5m
42.0	98.6	197	197	98.2	41.8	
3.9	9.2	18.4	18.4	9.2	3.9	0'/0m
42.1	99.0	198	198	98.5	41.9	
2.1	4.0	4.5	4.5	4.0	2.1	1.5'/0.5m
23.0	43.3	48.9	48.9	43.2	22.9	
0.9	1.4	1.3	1.3	1.4	0.8	1.5'/0.5m
9.2	15.0	13.9	14.0	15.0	9.1	1.5'/0.5m

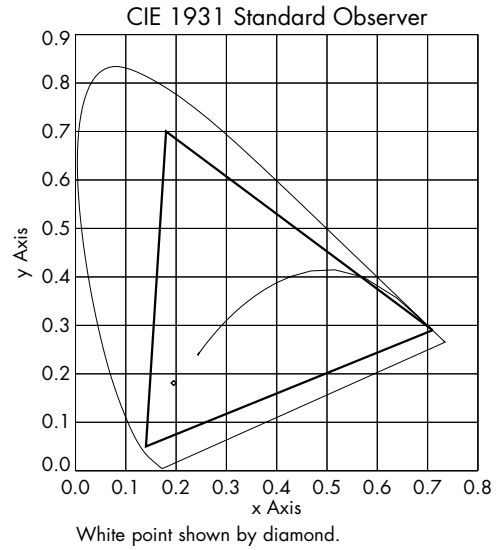
Units: Footcandles/Lux
 Measured on: White
 Distance from surface: 1'/0.3m (from center of grid)
 Multipliers: 0.23 Red, 0.60 Green, 0.17 Blue

ILLUMINANCE

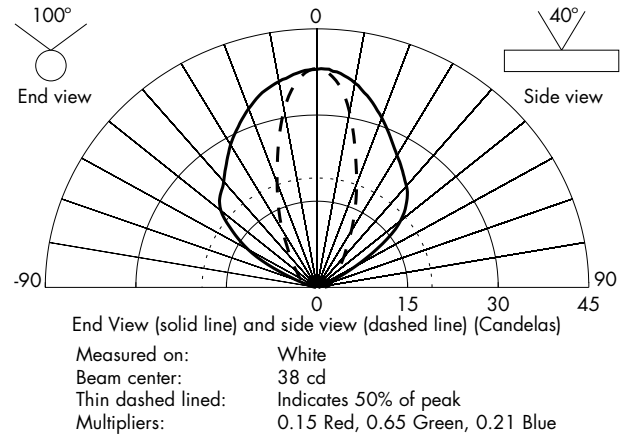
COLOR	3'	6'	9'	12'	15'
	1m	2m	3m	4m	5m
WHITE	3.5 37.8	0.9 9.4	0.4 4.2	0.2 2.4	0.1 1.5
RED	0.5 5.7	0.1 1.4	0.1 0.6	0.0 0.4	0.0 0.2
GREEN	2.3 24.6	0.6 6.1	0.3 2.7	0.1 1.5	0.1 1.0
BLUE	0.7 7.9	0.2 2.0	0.1 0.9	0.0 0.5	0.0 0.3

Measured in Footcandles/Lux on axis.

GAMUT



CANDLE POWER DISTRIBUTION

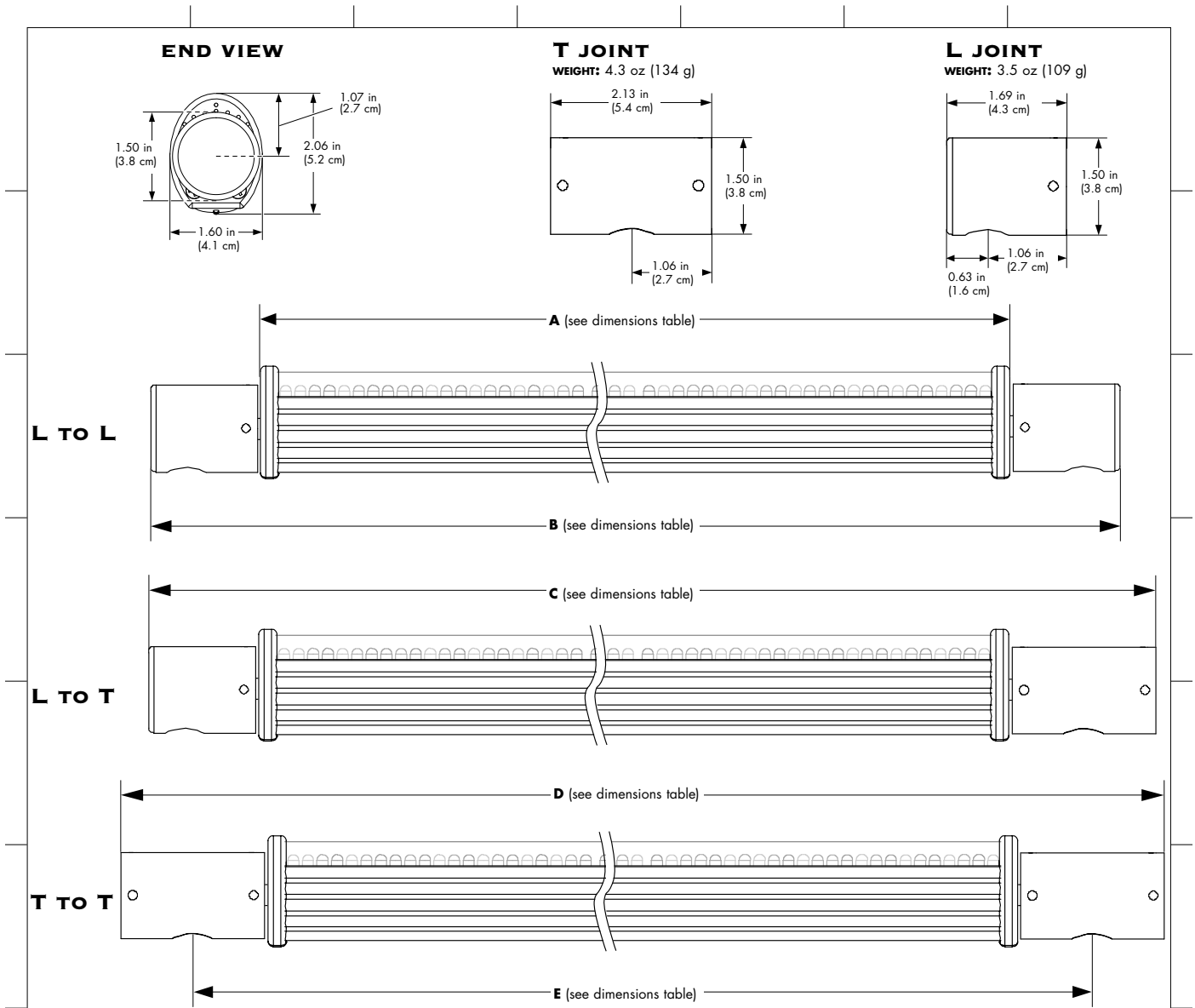


LIGHT OUTPUT

COLOR	TOTAL OUTPUT (LUMENS)	POWER (WATTS)	EFFICACY (lm/w)
WHITE	48.2	6.1	7.9
RED	7.2	1.7	4.3
GREEN	31.4	2.5	12.8
BLUE	9.6	2.5	3.9

iCOLOR FRESCO

PHYSICAL DIMENSIONS



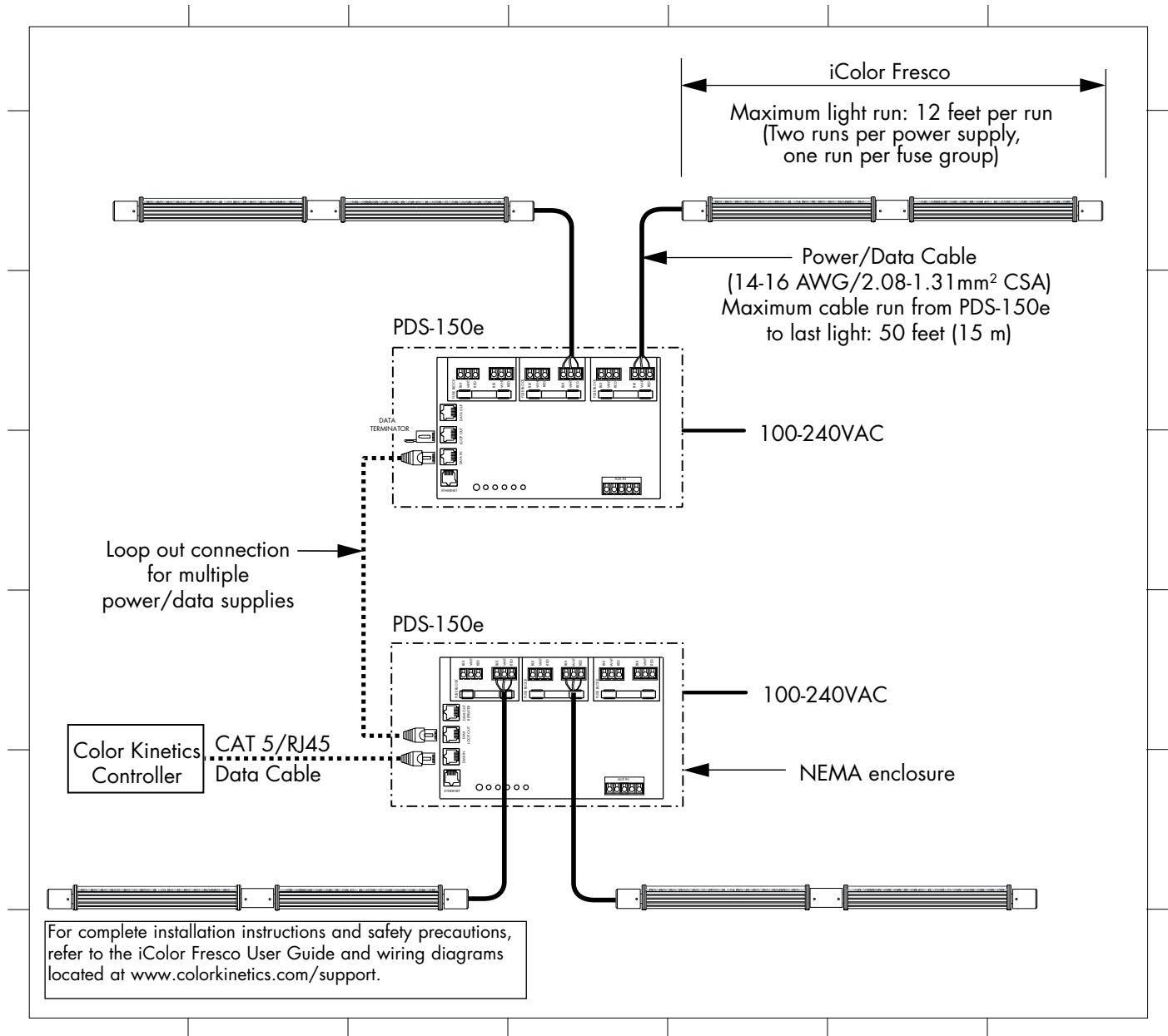
iCOLOR FRESCO DIMENSIONS*			
MODEL	iColor Fresco 1'	iColor Fresco 2'	iColor Fresco 4'
A	12.33 in (31.3 cm)	24.09 in (61.2 cm)	47.61 in (120.9 cm)
B	16.00 in (40.6 cm)	27.75 in (70.5 cm)	51.25 in (130.2 cm)
C	16.44 in (41.8 cm)	28.19 in (71.6 cm)	51.69 in (131.3 cm)
D	16.88 in (42.9 cm)	28.63 in (72.7 cm)	52.13 in (132.4 cm)
E	14.75 in (37.5 cm)	26.50 in (67.3 cm)	50.00 in (127.0 cm)

iCOLOR FRESCO SPECIFICATIONS			
MODEL	iColor Fresco 1'	iColor Fresco 2'	iColor Fresco 4'
WEIGHT	14.5 oz (411 g)	1 lb, 10 oz (737 g)	3 lb, 1 oz (1389 g)
DATA CONNECTOR	Underterminated data cable	Underterminated data cable	Underterminated data cable
POWER CONNECTOR	Underterminated power cable	Underterminated power cable	Underterminated power cable
POWER REQUIREMENT	250 mA @ 24VDC (6 W)	500 mA @ 24VDC (12 W)	1 A @ 24VDC (24 W)

* When installed, the L and T joints must be connected to electrical junction boxes with a length of threaded pipe or conduit. Be sure to take the pipe and junction box dimensions into account when calculating overall stand-off dimensions.

iCOLOR FRESCO

FUNCTIONAL FLOW DIAGRAM



MANUFACTURING STANDARDS

To ensure the highest level of product reliability, this Color Kinetics design endured accelerated life test conditions including an operating temperature span of 360°F and cyclic loading up to 60G.