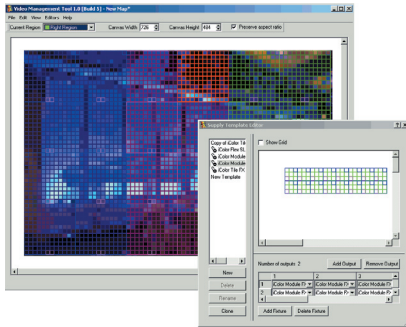


## VIDEO SYSTEM MANAGER



Color Kinetics® introduces Video With Light™, a new concept for using video-based content to control Color Kinetics large-scale Ethernet lighting installations. Video With Light is made possible by Video System Manager—an integrated software/hardware system comprised of Video Management Tool, a software mapping tool, and Video System Engine, a hardware video processing device. Video System Manager turns Color Kinetics Ethernet-based lighting installations into low-resolution video displays. Using Video System Manager, each light or light node in the installation acts as a pixel in the video display.

Video Management Tool (VMT) is a software tool designed specifically for mapping Color Kinetics Ethernet installations in order to stream digital images onto the fixtures/nodes. Video Management Tool's easy-to-use graphic interface provides simple map creation using drop and drag templates for standard and custom installations. Templates for Color Kinetics most popular video-display products are provided, and the option to create custom templates to match customized applications is available. Video Management Tool's viewing feature displays the video image with approximate fit and resolution. Video Management Tool supports Windows 2000, Windows XP, and Mac OS X.

Video System Engine is an Ethernet-based hardware video processing device which supports Firewire digital video from a variety of sources such as media servers, DVD players, camcorders, and personal computers. Video System Engine is available in desktop or rack mount styles. After downloading installation maps to Video System Engine, large-scale installations become video displays

### VIDEO MANAGEMENT TOOL SOFTWARE REQUIREMENTS

<b>HARDWARE</b>	Pentium® 3 or higher processor and an Ethernet card (Pentium 4 recommended)
<b>OPERATING SYSTEM</b>	Windows 2000, Windows XP, Mac OS X
<b>REQUIRED DISK SPACE</b>	10MB
<b>RAM REQUIRED</b>	256MB minimum (512MB recommended)
<b>LANGUAGE</b>	English
<b>CD-ROM DRIVE</b>	Required for installation

### VIDEO SYSTEM ENGINE SPECIFICATIONS

<b>HARDWARE</b>	OEM PC with custom firmware and two 6-pin Firewire jacks
<b>POWER SUPPLY</b>	200W
<b>RAM</b>	256MB
<b>MEMORY</b>	40GB
<b>SOFTWARE</b>	Color Kinetics proprietary software
<b>POWER REQUIREMENT</b>	110–220VAC manual switch
<b>SIZE</b>	Desktop: 8.5" (19.1 cm) W X 8" (17.0 cm) H X 12.5" (35.6 cm) D Rack Mount: Standard 1U
<b>CAPABILITY</b>	Supports up to 30,000 individual nodes or fixtures

### LSE OPERATING ENVIRONMENT SPECIFICATIONS

<b>TEMPERATURE</b>	50°F–100°F (10°C–38°C); 68°F (20°C) optimal
<b>HUMIDITY</b>	0–80%

### LSE OPERATING ENVIRONMENT SPECIFICATIONS

<b>VIDEO CONVERTER</b>	Such as Canopus Twin Pact 100
<b>ETHERNET SWITCH</b>	Gigabit Ethernet Switch

ITEM# 103-000018-00 (Desktop)  
ITEM# 103-000018-01 (Rack Mount)

This product is protected by one or more of the following patents:  
U.S. Patent Nos. 6,016,038, 6,150,774 and other patents listed at  
<http://colorkinetics.com/patents/>. Other patents pending.

©2004-2005 Color Kinetics Incorporated. All rights reserved.  
Chromacore, Chromasic, Color Kinetics, the Color Kinetics  
logo, ColorBlast, ColorBlaze, ColorBurst, ColorCast, ColorPlay,  
ColorScape, Direct Light, iColor, iColor Cove, iPlayer, Optibin,  
QuickPlay, Sauce, the Sauce logo, and Smartjuice are registered  
trademarks and DIMand, IntelliWhite, Powercore, and Video With  
Light are trademarks of Color Kinetics Incorporated.

All other brand or product names are trademarks or  
registered trademarks of their respective owners.

BR0154 Rev 01

Specifications subject to change without notice.

# VIDEO SYSTEM MANAGER

## INSTALLATION DIAGRAMS

