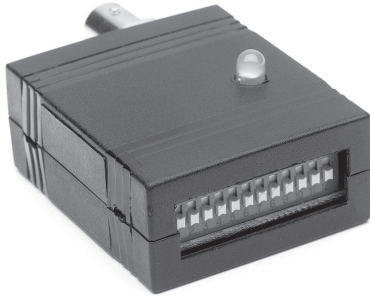


**SYNCHRONIZER**


Color Kinetics® Synchronizer is a simple, affordable solution for controlling multiple Color Kinetics light fixtures simultaneously. It synchronizes up to 12 individual light addresses. With data repetition, one Synchronizer can control an unlimited number of fixtures. The Synchronizer features seven DIP switch programmable light shows including the Chasing Rainbow Show, which produces a beautiful, cascading, revolving rainbow of light.

With real-time color and effect changes, switch settings take effect immediately without having to repower the light fixtures. The Synchronizer includes a full spectrum Chromacore®-powered feedback LED to confirm the desired color and effect when the fixtures are not in direct view.

**FEATURES**

- Real-time color and effects changing
- Chromacore-powered full spectrum feedback LED
- Synchronizes up to 12 individual light addresses
- Compatible with all Color Kinetics fixtures and power supplies
- Compact size

**SYNCHRONIZER SPECIFICATIONS**

<b>CONTROL</b>	Stand Alone, DIP Switch
<b>HOUSING</b>	Black plastic
<b>CONNECTORS</b>	RJ45 data connector, BNC power connector
<b>POWER</b>	24VDC

**DESCRIPTION OF SHOWS**

<b>FIXED COLOR</b>	Static display of a single color
<b>COLOR WASH</b>	Colors transition gracefully from color to color, cycling through the entire color wheel
<b>CROSS FADE</b>	Colors cycle back and forth gracefully between two colors
<b>RANDOM COLOR</b>	Colors step or jump from one color to the next in random order
<b>FIXED COLOR STROBE</b>	A constant color appears in a rapid series of intense flashes of light
<b>VARIABLE COLOR STROBE</b>	A sequence of colors appear in a rapid series of intense flashes of light
<b>CHASING RAINBOW</b>	When applied to a group of lights, colors of the rainbow appear to chase each other from light to light

**U.S. AND FOREIGN PATENTS AND PATENTS PENDING**
**ITEM# 103-000001-00**

This product is protected by one or more of the following patents:  
U.S. Patent Nos. 6,016,038, 6,150,774 and other patents listed at  
<http://colorkinetics.com/patents/>. Other patents pending.

©2002-2005 Color Kinetics Incorporated. All rights reserved.  
Chromacore, Chromasic, Color Kinetics, the Color Kinetics logo, ColorBlast, ColorBlaze, ColorBurst, ColorCast, ColorPlay, ColorScape, Direct Light, iColor, iColor Cove, iPlayer, Optibin, QuickPlay, Sauce, the Sauce logo, and Smartjuice are registered trademarks and DIMand, IntelliWhite, Powercore, and Video With Light are trademarks of Color Kinetics Incorporated.

All other brand or product names are trademarks or registered trademarks of their respective owners.

BR0011 Rev 11

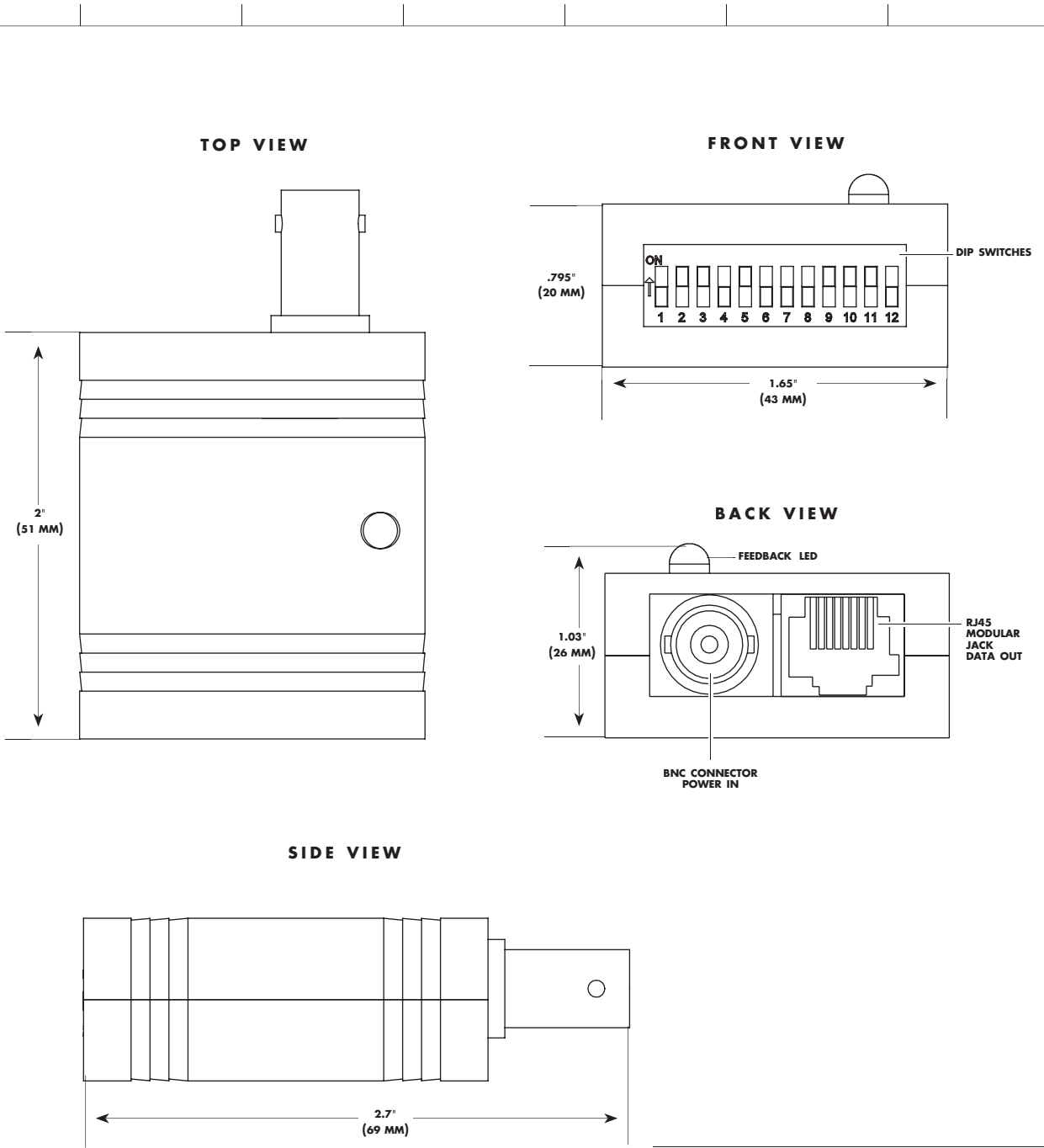
Specifications subject to change without notice.

Color Kinetics illumination products utilize high brightness LEDs as the illumination source. LED manufacturers predict LED life of up to 100,000 hours MTBF (mean time between failure), the standard used by conventional lamp manufacturers to measure source life. However, like all basic light sources, LEDs also experience lumen depreciation over time. So while LEDs can emit light for an extremely long period of time, MTBF is not the only consideration in determining useful life. LED lumen depreciation is affected by numerous environmental conditions such as ambient temperature, humidity and ventilation. Lumen depreciation is also affected by means of control, thermal management, current levels, and a host of other electrical design considerations.

Color Kinetics systems are expertly engineered to optimize LED life when used under normal operating conditions [ambient temperature: -4° F to 104° F (-20° C to 40° C), humidity: 0-95% non-condensing humidity, adequate ventilation and air volume] and when operated using typical color-changing effects. Long-term operation outside of these ranges or conditions, or at the upper limits of these ranges or conditions, may subject the product to further degradation of the LED source life, or in extreme cases, failure of internal components. Source life information is based on LED manufacturers' data, as well as other third party testing.

# SYNCHRONIZER

## PHYSICAL DIMENSIONS

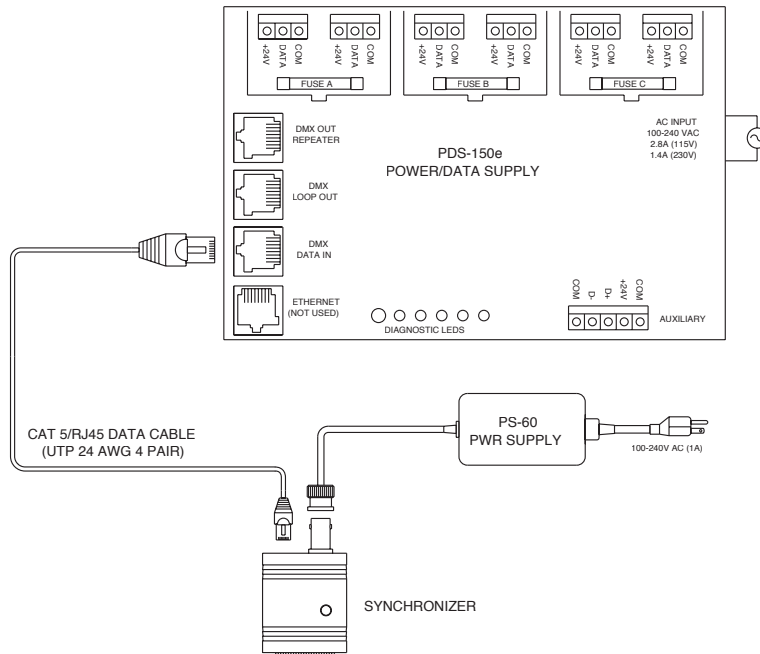


SYNCHRONIZER ITEM # 103-000001-00	
WEIGHT	1.3 oz (37g)
DATA	RJ45 connector data output ports
POWER CONNECTOR	BNC connector - female
	100mA@24VDC (2.4W)

# SYNCHRONIZER

## PHYSICAL DIMENSIONS

### USING PS-60 POWER SOURCE



### USING PDS-150e/500e POWER SOURCE

