



Date: \_\_\_\_\_ Type: \_\_\_\_\_

Firm Name: \_\_\_\_\_

Project: \_\_\_\_\_

# PDS-750 TRX

Versatile power / data supply for entertainment applications

☰ For device mounting details, refer to the Installation Instructions included in the product packaging, or download documentation from [www.citytheatrical.com/ck.htm](http://www.citytheatrical.com/ck.htm)

PDS-750 TRX is a versatile, multi-protocol power / data supply designed for entertainment and event installations with Philips Color Kinetics fixtures, including the latest generation of LED lighting: ColorBlast TRX, ColorBlast TR (16 and 8 bit), and iW Blast TR.

- Compatible with all popular protocols — PDS-750 TRX can accept KiNET, Streaming ACN, and Art-Net over Ethernet. It supports USITT standard 5-pin DMX and ESTA RDM DMX input and output, and includes wireless DMX via a built-in SHoW wireless receiver.
- Ethernet pass-thru capabilities — Includes two EtherCON connectors and built-in Ethernet switch to provide pass-thru to downstream devices, as well as a built-in Ethernet node gateway, which, when using one of the Ethernet control protocols, allows the assignment of any of the 12 outputs (or the DMX output) to one of two virtual DMX512 universes.
- On-board addressing controls and built in effects — Includes seven configurable visual effects which you can trigger with on-board controls. These controls include addressing and fixture configuration capabilities that eliminate the need for external addressing tools or software. The PDS-750 TRX includes a USB port for firmware updates.

- Heavy-duty steel and aluminum enclosure — The device's rugged NEMA 1 (IP20) enclosure is designed for dry locations and is ideal for temporary installations and demanding environments typical of entertainment and rental applications.
- Versatile mounting — Convertible mounting brackets can be bolted to the device vertically or horizontally and fit to 4U sized racks. They can also be bolted to C-clamps.
- Accommodates various voltages and protects against short-circuits — Automatically accommodates input voltages ranging from 100 VAC to 240 VAC. Short-circuit protection prevents device failure due to incorrectly wired fixtures.

## Compatible Fixtures

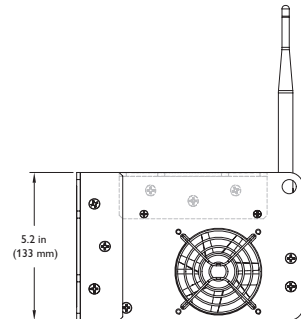
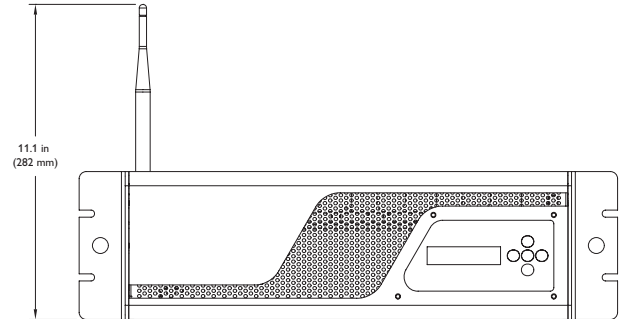
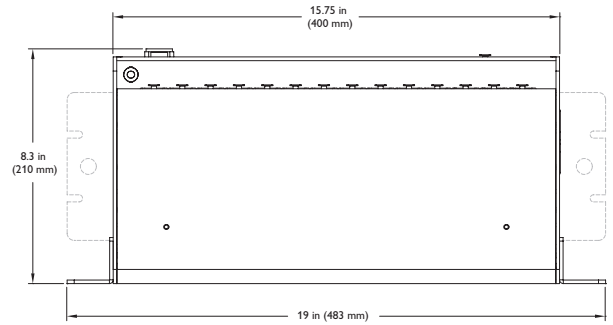
Fixture	Maximum Quantity Per PDS-750 TRX
ColorBlast TRX	12
ColorBlast TR	12
iW Blast TR	12

## Specifications

Due to continuous improvements, specifications may change without notice.

Item	Specification	Details	
Electrical	Input Voltage	100 – 240 VAC, auto-switching, 50 / 60 Hz	
	Power Output	24 VDC, 3 A current limit per circuit, 750 W maximum	
Physical	Dimensions (Height x Width x Depth)	5.3 x 19 x 8 in (134 x 483 x 204 mm)	
	Weight	14 lb (6.4 kg)	
	Construction	Heavy-duty steel and aluminum NEMA-1 housing, with standard theatrical C-clamp and safety cable mounting points	
	Finish	Black matte	
	Connectors	Data Input	5-pin XLR supports DMX / RDM Wireless SHoW DMX antenna
		Data Output	5-pin XLR supports DMX / RDM
		Data Input / Output	(2) RJ45-compatible EtherCon Ethernet ports support Art-Net, Streaming DMX over ACN, KiNET*
		Power / Data Output	(12) 4-pin XLR output connectors
		Firmware Updates	USB port for firmware updates via USB stick
	Temperature Ranges	32° – 104° F (0° – 40° C) Operating 32° – 122° F (0° – 50° C) Startup -40° – 176° F (-40° – 80° C) Storage	
	Humidity	0 – 95%, non-condensing	
	Cooling	Cooling fan	
	Airflow	Front panel input, left side panel output	
	Heat Dissipation	25% of total power input at maximum load	
	Data Input	Supports all controllers that output DMX, KiNET, streaming ACN, and Art-Net	
Certification and Safety	Certification	ETL / cETL, CE, FCC Part 15	
	Environment	Dry Location, IP20	

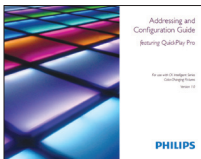
\* KiNET is the Ethernet lighting protocol from Philips Color Kinetics.



## Ordering Information

Item	Item Number	Philips 12NC
PDS-750 TRX	109-000030-00	910503702319

Use Item Number when ordering in North America.



For instructions covering how to configure PDS-750 TRX, refer to the *Addressing and Configuration Guide* available online at [www.colorkinetics.com/support/addressing/](http://www.colorkinetics.com/support/addressing/)



Philips Color Kinetics  
3 Burlington Woods Drive  
Burlington, Massachusetts 01803 USA  
Tel 888.385.5742  
Tel 617.423.9999  
Fax 617.423.9998  
[www.philipscolorkinetics.com](http://www.philipscolorkinetics.com)

Copyright © 2011 Philips Solid-State Lighting Solutions, Inc. All rights reserved.  
Chromacore, Chromasic, CK, the CK logo, Color Kinetics, the Color Kinetics logo, ColorBlast, ColorBlaze, ColorBurst, eW Fuse, ColorGraze, ColorPlay, ColorReach, iW Reach, eW Reach, DIMand, EssentialWhite, eW, iColor, iColor Cove, IntelliWhite, iW, iPlayer, Optibin, and Powercore are either registered trademarks or trademarks of Philips Solid-State Lighting Solutions, Inc. in the United States and / or other countries. All other brand or product names are trademarks or registered trademarks of their respective owners. Due to continuous improvements and innovations, specifications may change without notice. DAS-000084-01 R00 04-11