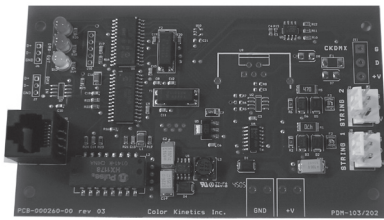


## PDM-202



Color Kinetics® PDM-202 is a Series 200 power/data module. The PDM-202 allows product designers to easily integrate the Series 200 digital light engines (DLEs) and lamps with a variety of commercially available power supplies. The PDM-202 integrates with common power supplies in a variety of power and data distribution options. The PDM-202's simple electrical and mechanical design allows you to combine it with a power supply to create a unified power/data supply or integrate it directly into the fixture design to create a fully controllable lighting system.

The total number of Series 200 DLEs that a single PDM-202 can support is dependent on a variety of factors including the wattage requirements of all the DLEs in the system, the output of the power supply, as well as the physical layout of the system.

The PDM-202 accepts Color Kinetics' Ethernet-based control protocol and delivers a Series 200 DLE-compatible data format known as Chromasic®. By supporting the Ethernet-based control protocol, the Series 200 DLEs connected to the PDM-202 can be controlled by a number of Color Kinetics' controllers.

The Color Kinetics' Ethernet-based control protocol allows the PDM-202 to support a variety of useful system configuration and operation features including: auto-discovery of the Color Kinetics LED lights on the Ethernet network and remote addressing of the lights. These features make system installations easy, regardless of the size of the configuration.

### FEATURES

- Economical
- Compact Size
- Easy to Integrate
- Ethernet ready
- Compatible with any Series 200 Digital Light Engine
- Supports automatic discovery of Color Kinetics LED light systems

#### PDM-202 ITEM# 118-000063-00

This product is protected by one or more of the following patents: U.S. Patent Nos. 6,016,038, 6,150,774 and other patents listed at <http://colorkinetics.com/patents/>. Other patents pending.

©2006 Color Kinetics Incorporated. All rights reserved. Chromacore, Chromasic, Color Kinetics, the Color Kinetics logo, ColorBlast, ColorBlaze, ColorBurst, ColorCast, ColorPlay, ColorScape, Direct Light, iColor, iColor Cove, iPlayer, Optibin, Powercore, QuickPlay, Sauce, the Sauce logo, and Smartjuice are registered trademarks and DIMand, EssentialWhite, eW, IntelliWhite, iW, and Light Without Limits are trademarks of Color Kinetics Incorporated.

All other brand or product names are trademarks or registered trademarks of their respective owners.

BR0192 Rev 00

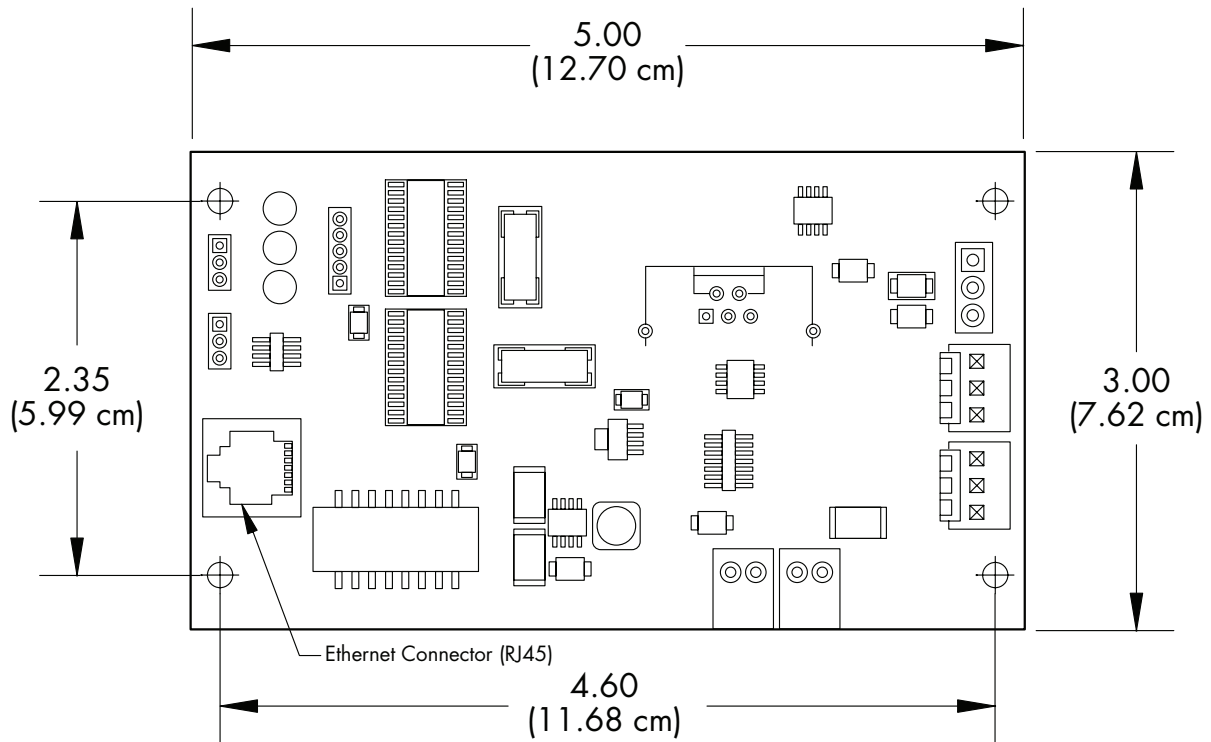
Specifications subject to change without notice. Refer to [www.colorkinetics.com](http://www.colorkinetics.com) for the most recent data sheet versions.

### PDM-202 SPECIFICATIONS

<b>POWER INPUT</b>	7.5VDC, 12VDC, or 24VDC
<b>POWER OUTPUT</b>	7.5VDC, 12VDC, or 24VDC
<b>AMBIENT OPERATING TEMP</b>	14°F to 122°F (-10°C to 50°C)
<b>CONNECTORS</b>	Data Input: RJ45 Power Input: Solder pads Control Output: 3-pin vertical header
<b>DATA INPUT INTERFACE</b>	Color Kinetics' Ethernet-based Control Protocol
<b>DATA OUTPUT INTERFACE</b>	Chromasic

**PDM-202**

PHYSICAL DIMENSIONS



**Note:** The PDM-202 board is 0.062" (1.6 mm) thick and the Ethernet connector (see above) is 0.65" (1.65 cm) high off the board.

For complete installation instructions and safety precautions, refer to the DLE Integration Guide and wiring diagrams located at [www.colorkinetics.com/support](http://www.colorkinetics.com/support).