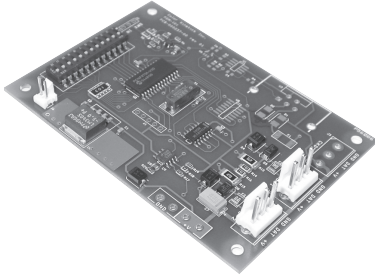


PDM-201



Color Kinetics® PDM-201 is a Series 200 power/data module. PDM-201 allows product designers to easily integrate the Series 200 digital light engines (DLEs) and lamps with a variety of available power supplies. By supporting 7.5VDC, 12VDC, or 24VDC power input, the PDM-201 supports standard power supplies in a variety of configurations which allows several power and data distribution options. The simple design allows you to combine it with a power supply or integrate it directly into a light fixture. The total number of DLEs that a single PDM-201 can drive is dependent on the wattage of each DLE.

PDM-201 data circuitry conditions data supplied from standard or differential DMX data inputs or from on-board preprogrammed settings to a format compatible with Series 200 DLEs based on Chromasic™ technology. The Chromasic microchip integrated into each Series 200 DLE integrates power, communication, and control to enable the Series 200 system.

PDM-201 offers a choice of controls including Color Kinetics or third-party controllers, or preprogrammed effects. The preprogrammed effects include fixed color, color wash, rainbow wash, and random color. The 12 dipswitches allows selection the effect mode, and then modification of the effect by setting the speed, color, etc.

FEATURES

- Economical
- Compact size
- Ease of installation
- DMX ready
- Choice of preprogrammed light effects
- Support automatic and manual configuration of number of lights per output

PDM-201 ITEM# 118-000062-00

Applications using this technology or product may be covered under one of the following patents:
U.S. Patent Nos. 6,016,038, 6,150,774 and other patents listed at <http://colorkinetics.com/patents/>.
Other patents pending.

©2005 Color Kinetics Incorporated. All rights reserved. Chromacore, Chromasic, Color Kinetics, the Color Kinetics logo, ColorBlast, ColorBlaze, ColorBurst, ColorCast, ColorPlay, ColorScape, Direct Light, iColor, iColor Cove, iPlayer, Optibin, QuickPlay, Sauce, the Sauce logo, and Smartjuice are registered trademarks and DiMand, IntelliWhite, Powercore, and Video With Light are trademarks of Color Kinetics Incorporated.

All other brand or product names are trademarks or registered trademarks of their respective owners.

BR0164 Rev 01

Specifications subject to change without notice.

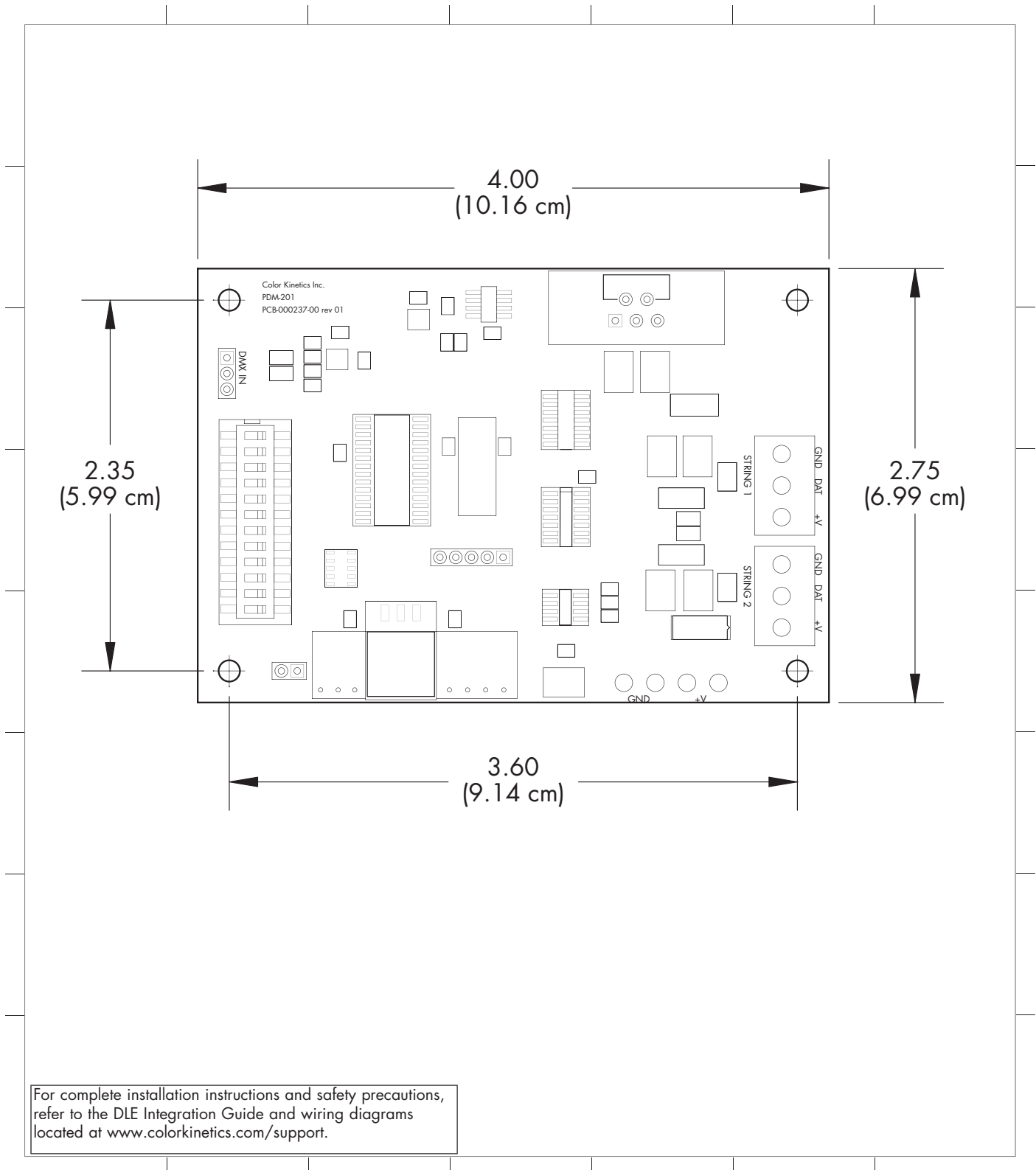
PDM-201 SPECIFICATIONS

POWER INPUT	7.5VDC, 12VDC, or 24VDC
POWER OUTPUT	7.5VDC, 12VDC, or 24VDC
AMBIENT OPERATING TEMP	14°F to 122°F (-10°C to 50°C)
CONNECTORS	Output: 3-pin vertical header, Power: solder pads
DATA INPUT INTERFACE	DMX512
DATA OUTPUT INTERFACE	Chromasic

U.S. AND FOREIGN PATENTS AND PATENTS PENDING

PDM-201

PHYSICAL DIMENSIONS



For complete installation instructions and safety precautions, refer to the DLE Integration Guide and wiring diagrams located at www.colorkinetics.com/support.