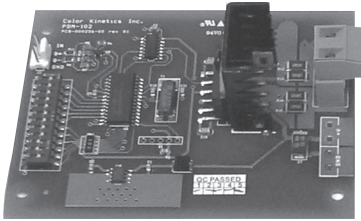


PDM-102



Color Kinetics® PDM-102 is a Series 100 power/data module. PDM-102 allows product designers to easily integrate Color Kinetics iColor MR g2 with a variety of available power supplies. By supporting a common 24VDC power input, PDM-102 supports standard power supplies in a variety of configurations which allows several power and data distribution options. The simple design allows integration with a power supply or directly into a light fixture. The PDM-102 can drive a maximum of six iColor MR g2 lamps.

PDM-102 conditions data supplied from a standard, differential DMX data input or from on-board pre-programmed settings to a format compatible with iColor MR g2 known as SmartJuice®. SmartJuice uses two conductors, such as track wiring, to provide both power and data to the iColor MR g2 lamps. The maximum total length of conductors between the PDM-102 and the lamps is 10 feet (3 meters).

PDM-102 offers a choice of controls including Color Kinetics or third-party controllers, and pre-programmed effects. These effects include fixed color, color wash, rainbow wash, and random color. The 12 dipswitches allow selection of the effect mode, and then modification of the effect by setting the speed, color, etc.

Note: PDM-102 is only compatible with Color Kinetics iColor MR g2 lamps. Use of other types of lamps (including incandescent MR16 bulbs and Color Kinetics iW MR lamps) will damage the PDM-102.

FEATURES

- Economical
- Compact size
- Ease of installation
- DMX ready
- Choice of pre-programmed light effects

PDM-102 ITEM# 118-000053-00

This product is protected by one or more of the following patents:
U.S. Patent Nos. 6,016,038, 6,150,774 and other patents listed at
<http://colorkinetics.com/patents/>. Other patents pending.

©2005 Color Kinetics Incorporated. All rights reserved.
Chromacore, Chromasic, Color Kinetics, the Color Kinetics logo, ColorBlast, ColorBlaze, ColorBurst, ColorCast, ColorPlay, ColorScape, Direct Light, iColor, iColor Cove, iPlayer, Optibin, QuickPlay, Sauce, the Sauce logo, and Smartjuice are registered trademarks and DIMand, IntelliWhite, Powercore, Video With Light, and Light Without Limits are trademarks of Color Kinetics Incorporated.

All other brand or product names are trademarks or registered trademarks of their respective owners.

BRO180 Rev 00

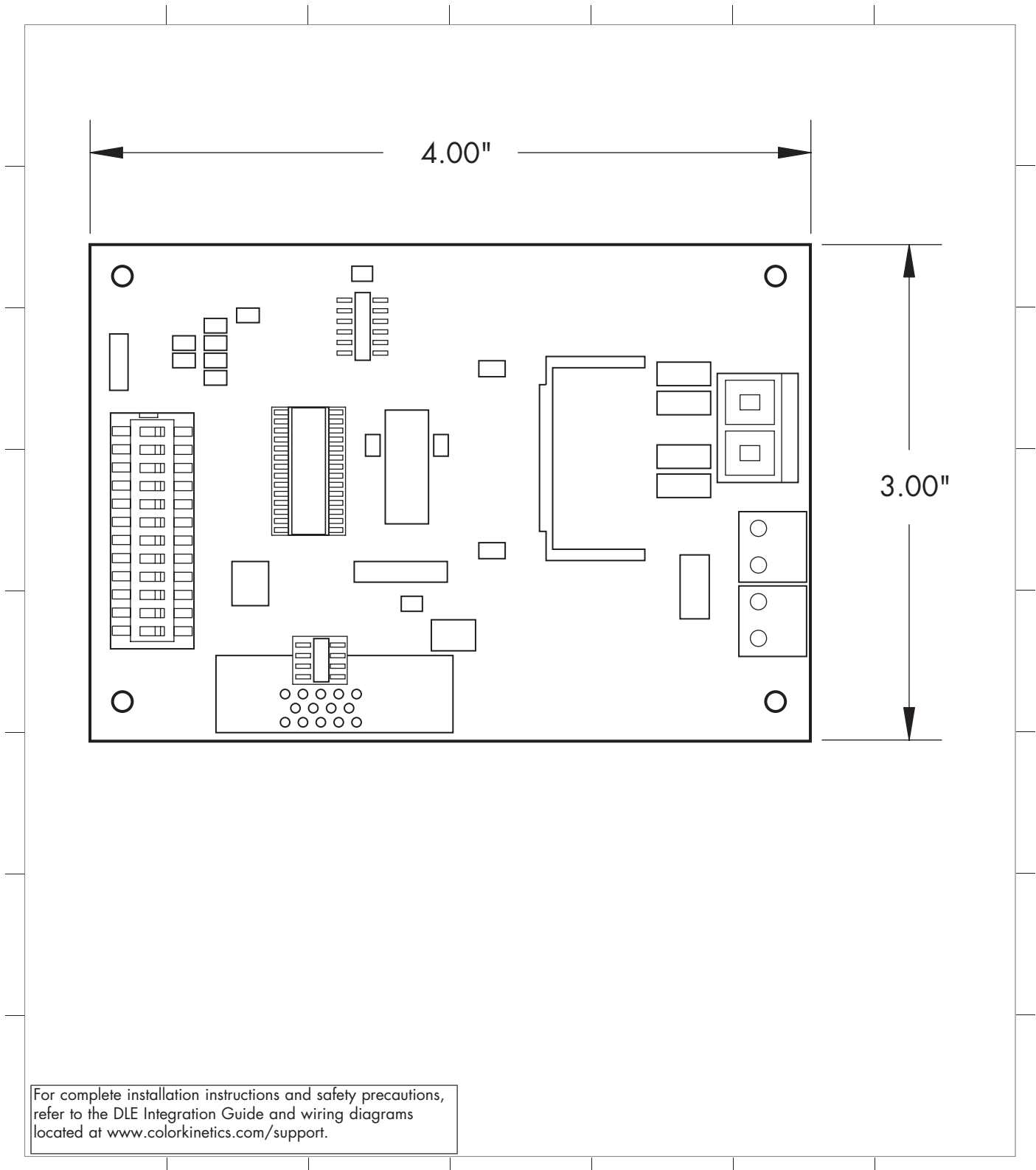
Specifications subject to change without notice.

PDM-102 SPECIFICATIONS

POWER INPUT	24VDC
POWER OUTPUT	24VDC
AMBIENT OPERATING TEMP	14°F to 122°F (-10°C to 50°C)
DATA CONNECTORS	3-pin vertical header
POWER CONNECTORS	Solder pads
DATA INPUT INTERFACE	DMX512
DATA OUTPUT INTERFACE	Smartjuice

PDM-102

PHYSICAL DIMENSIONS

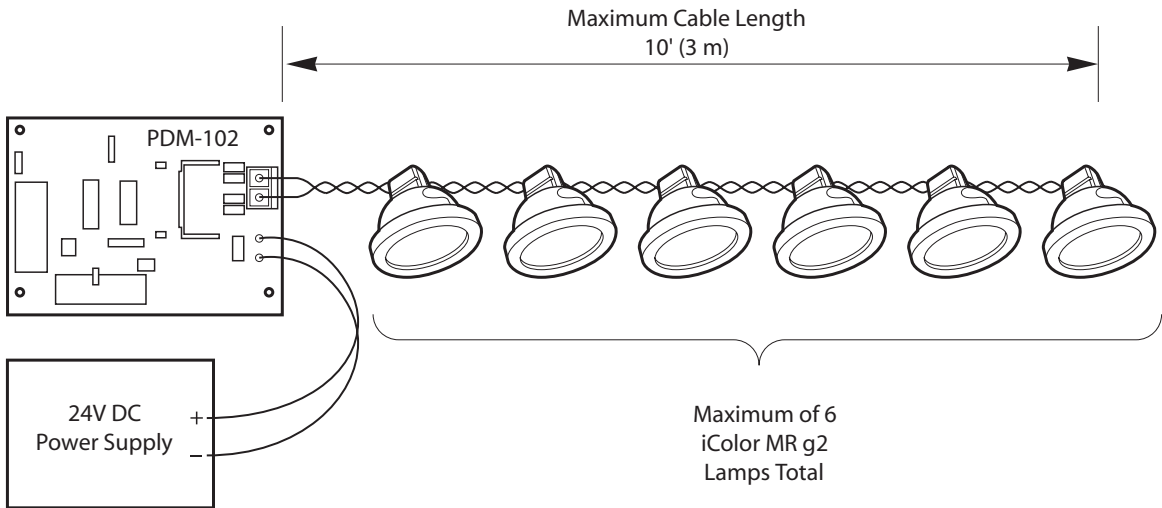


For complete installation instructions and safety precautions, refer to the DLE Integration Guide and wiring diagrams located at www.colorkinetics.com/support.

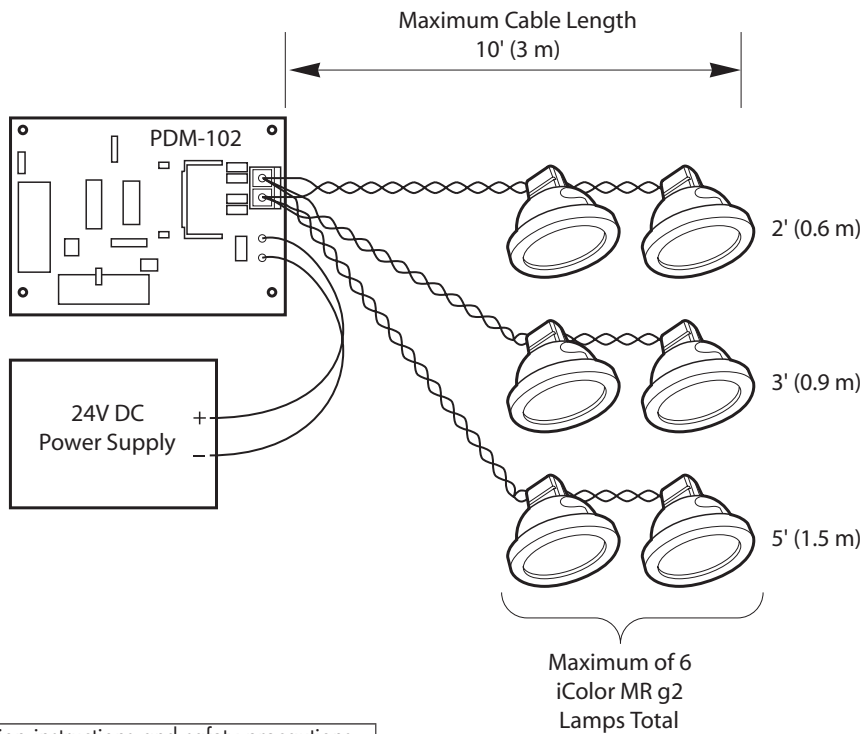
PDM-102

FUNCTIONAL FLOW DIAGRAM

PDM-102 Wiring Diagram- Example 1



PDM-102 Wiring Diagram- Example 2



For complete installation instructions and safety precautions, refer to the DLE Integration Guide and wiring diagrams located at www.colorkinetics.com/support.