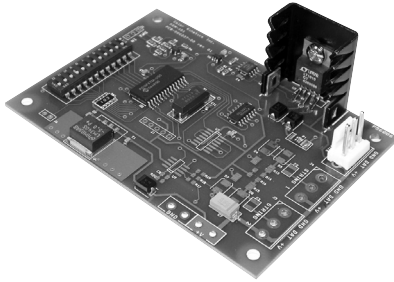


PDM-101



Color Kinetics® PDM-101 is a Series 100 power/data module. PDM-101 allows product designers to easily integrate the Series 100 digital light engines (DLEs) and lamps with a variety of commercially available power supplies. Based on a standard 24VDC power input, the PDM-101 supports common power supplies in a variety of power and data distribution options. The simple electrical and mechanical design of the PDM-101 allows you to combine it with a power supply to create a unified power/data supply or integrate it directly into the fixture design to create a fully controllable lighting system.

The total number of DLEs that a single PDM-101 can support is dependant on a number of factors, including the wattage requirements of all the DLEs, the output of the power supply, as well as the physical layout of the system.

The PDM-101 accepts standard DMX512 control and delivers a DLE compatible control format known as CKDMX. This control format does not change the DMX512 data format, it only supports a simplified electrical scheme where power and data share a common electrical ground. By supporting the industry standard DMX512 control input, the PDM-101 can support Color Kinetics' wide variety of controllers or any third-party DMX-based controller systems.

The PDM-101 also provides stand-alone lighting effects with on-board pre-programmed effects. These effects include fixed color, color wash, rainbow wash, and random color. The shows are selected by setting dipswitches to select the effect mode, speed, color, etc.

FEATURES

- Economical
- Compact size
- Ease of installation
- DMX ready
- Choice of Preprogrammed light effects

PDM-101 ITEM# 118-000052-00

Applications using this technology or product may be covered under one of the following patents:
U.S. Patent Nos. 6,016,038, 6,150,774 and other patents listed at <http://colorkinetics.com/patents/>.
Other patents pending.

©2005-2006 Color Kinetics Incorporated. All rights reserved.
Chromacore, Chromasic, Color Kinetics, the Color Kinetics logo, ColorBlast, ColorBlaze, ColorBurst, ColorCast, ColorPlay, ColorScape, Direct Light, iColor, iColor Cove, iPlayer, Optibin, Powercore, QuickPlay, Sauce, the Sauce logo, and Smartjuice are registered trademarks and DIMand, EssentialWhite, IntelliWhite, and Light Without Limits are trademarks of Color Kinetics Incorporated.

All other brand or product names are trademarks or registered trademarks of their respective owners.

BRO161 Rev 02

Specifications subject to change without notice. Specifications subject to change without notice. Refer to www.colorkinetics.com for the most recent data sheet versions.

PDM-101 SPECIFICATIONS

POWER INPUT	24VDC
POWER OUTPUT	24VDC
AMBIENT OPERATING TEMP	14°F to 122°F (-10°C to 50°C)
CONNECTORS	Data: 3-pin vertical header, Power: Solder pads
DATA INPUT INTERFACE	DMX512
DATA OUTPUT INTERFACE	CKDMX

PDM-101

PHYSICAL DIMENSIONS

