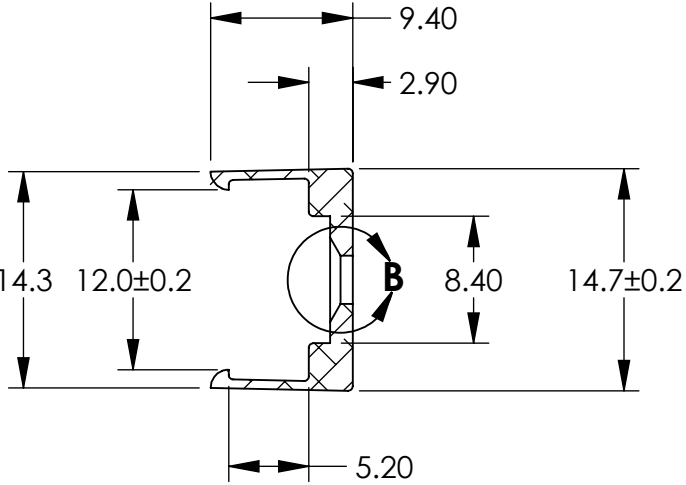
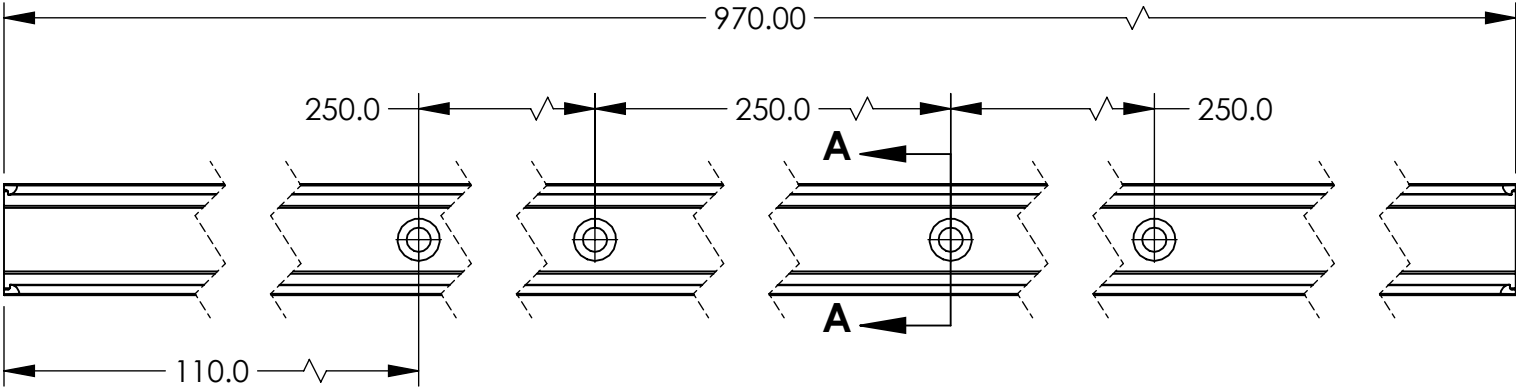
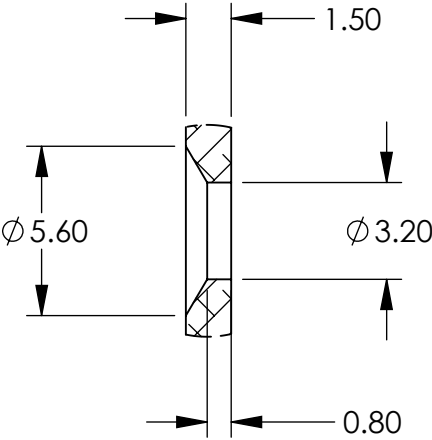


REVISIONS				
REV.	ECO	DESCRIPTION	DATE	APPROVED
00		INITIAL RELEASE	29-01-2018	NEWMAN LI



SECTION A-A
SCALE 2 : 1



DETAIL B
SCALE 4 : 1

- NOTES:
1. MATERIAL: 6063-T5.
 2. FINISH/COLOR: TYPE II ANODIZING,CLEAR, 12um THICKNESS.
 3. ANY OTHER SPECIAL COLOR PLEASE REFER TO THE DESCRIPTION IN ARENA ITEM.
 4. UNSPECIFIED DIMENSIONS SHOULD REFER TO RELEASED 3D CAD DATA BY PHILIPS COLOR KINETICS.
 5. CIRCLED DIMENSIONS ARE CRITICAL AND SUBJECT TO INSPECTION.
 6. COSMETIC REQUIREMENTS AND SURFACE CLASS REFER TO COSMETIC SPECIFICATION SHEET (SOP-000055-00).
 7. SILK SCREEN: PER ARTWORK CALLED OUT IN ARENA PART SPECIFICATION.
 8. MAXIMUM 0.3MM RADIUS ON ALL CORNERS AND EDGES.
 9. ANGLE OF TWIST TO BE 1° MAX END TO END.
 10. DO NOT LEAVE ANY RESIDUE ON THE SURFACES OF THE PART.
 11. PART MUST BE FREE EXTRUSION IMPERFECTIONS.
 12. PHILIPS LIGHTING REQUIRES THAT ALL PRODUCTS OR PARTS AND PRODUCT-PACKAGING DELIVERED TO PHILIPS LIGHTING COMPLY WITH ALL APPLICABLE ENVIRONMENTAL REGULATIONS DESCRIBED IN THE PHILIPS REGULATED SUBSTANCES LIST (RSL).

PROPRIETARY AND CONFIDENTIAL
THE INFORMATION CONTAINED IN THIS DRAWING IS THE
SOLE PROPERTY OF PHILIPS COLOR KINETICS, INC.
ANY REPRODUCTION IN PART OR AS A WHOLE
WITHOUT THE WRITTEN PERMISSION OF PHILIPS COLOR
KINETICS, INC. IS PROHIBITED.



PHILIPS COLOR KINETICS, INC. www.philips.com
3 Burlington Woods Dr. Burlington MA 01803
TEL: 888-385-5742 FAX: 617-338-0454

MATERIAL	SEE NOTES
FINISH	SEE NOTES
DRAWN	DATE
NEWMAN LI	1/29/2018
CHECKED	DATE

-UNLESS OTHERWISE SPECIFIED-

DIMENSIONS ARE IN MILLIMETERS
INTERPRET GEOMETRIC TOLERANCING
PER: ANSI Y14.5M

ANGLE
± 1°

THIRD ANGLE
PROJECTION

TOLERANCES:
DECIMAL
.X ±0.5 mm
.XX ±0.25 mm
.XXX ±0.125 mm

DESCRIPTION
MECHANICAL, VAYA FREE FORM,
WH/TW, MOUNTING TRACK,
AL6063-T5, CLEAR ANODIZING

SIZE	DWG. NO.	REV
B	MEC-003144-XXX	00
FILE NAME	DO NOT SCALE DRAWING	SHEET 1 OF 1
MEC-003144-XX	SCALE 1:10	